

**Westside Neighborhood Council Meeting Minutes**  
**Thursday, April 14, 2016**  
**7:00 P.M.**  
**Westside Pavilion**  
**10800 W. Pico**

**1. Call to Order**

**Call to order: 7:06 PM**

**By Terri Tippit, WNC Chair**

**Attendance:**

**Jae Wu (Seat 1)**

**Lisa Morocco (Seat 2)**

**Chris Elliot (Seat 4 alternate)**

**David Burke (Seat 5)**

**Terri Tippit (Seat 8)**

**Stacy Antler (Seat 10)**

**Mary Kusnic (Seat 11)**

**Arturo Martinez (Seat 12 alternate)**

**Francesca Beale-Rosano (Seat 13)**

**Shannon Burns (Seat 14)**

**Lisa Tabor (Seat 16)**

**Aaron Rosenfield (Seat 17)**

**Seated after start:**

**Barbara Broide (Seat 7)**

**Sean McMillan (Seat 9)**

**Not Present:**

**Sarah Shaw (Seat 6)**

**Vacant:**

**Seat 3**

**Seat 15**

**New Business:**

**A) Approval of March 10, 2016 Minutes:**

**Minutes were reviewed and discussed. Motion to approve the minutes by Ms. Morocco.**

**Second: Ms. Kusnic**

**8-0-4**

**Seats in favor: 1,2,8,11,13,14,16,17**

**Seats abstaining: 4,5,10,12**

**Not present/vacant: 3,6,7,9,15**

**Passed**

***Mr. McMillan is seated***

**B) Selection to fill Open Seat 15 - candidate for Seat 15, Eric Shabsis**

**Mr. Shabsis – It is wonderful to be a part of this community. It's a community I have been all my life. My grandparents settled here after being in the holocaust and they had a factory here that employed 150 people in LA. This place has a place in my heart and I am happy to serve despite having to deal with DONE.**

**Ms. Morocco makes a motion to nominate Mr. Shabsis for Seat 15.**

**Second: Ms. Burns**

**Unanimous**

**Seats in favor: 1,2,4,5,8,9,10,11,12,13,14,16,17**

**Not present/vacant: 3,6,7,15**

**Passed**

***Mr. Shabsis and Ms. Broide are seated***

**C) Assembly Member Ridley-Thomas – Hi friends and neighbors, I have the pleasure of serving you in the State Assembly. I just got off the plane and am excited to bring good news. The Assembly voted today to begin the cleanup of the Exide Plant. We were able to test people's blood, which showed the plant was the cause. The plant has declared bankruptcy and split itself up. \$176 million will be used to clean up the plant and we will employ local people as a jobs program. There is a plume, lead and other contaminants; it's going to be a long cleanup. It will have been the longest environmental disaster in our State's history. This money is allocated as a loan. The people responsible have cut a deal to escape criminal liability but they are putting up \$40 million and may still be on the hook civilly.**

**I am chairman of the Committee on Revenue and Taxation. We have decided to look at tax reform. If the County goes to the ballot on homelessness it will go through this committee.**

**The State has adopted a minimum wage that is slower, but it goes to \$15 eventually and cannot decrease year to year. The City and State budgets are out of balance. The State has more stringent requirement to have a balanced budget going back to the Schwarzenegger era. We have been in the true black for the last four years. We have long term liabilities like pensions, infrastructure, etc. To get**

**us where we are taxpayers paid more and 15% was cut out of the budget to do that. If the economy in the state slows down, the minimum wage hike can slow down. This will raise many people out of poverty.**

**We will also have a Women in Finance event. If the board knows women in finance, banking, etc, we are partnering with several trade organizations to have an event of 600-700 people on the Westside. We will sponsor 30-40 sponsorships in Assembly District 54.**

**There is an attempt to get women into building. I am sponsoring 10 women from the 54<sup>th</sup> Assembly District to go to the conference in Chicago. We want to promote women in the workforce. Women are a significant part of the working world and a growing share. It would be great if the Neighborhood Council could submit some suggestions of people to attend.**

**Ms. Antler – After 19 denials, Leslie Van Houten of the Manson Family has been recommended by a parole board panel to be released and the governor has 30 days to approve or deny the recommendation. Do you think a letter writing campaign to the governor would help?**

**Ms. Broide – Vehicle Miles Traveled (VMT) is being considered instead of the traditional Level of Service (LOS). Some people think it's good to increase congestion for traffic calming. How do you balance the needs of pedestrians, bicycles and drivers' safety? LOS is important on the Westside because we already have terrible traffic.**

**Mr. Rosenfield – Can anything be done this year to work on fracking issues?**

**Assembly Member – First the fracking. A great deal has been done on fracking. California has the most stringent state rules on fracking. The economy and oil prices have made drilling less lucrative. LA now has less pumping activity now; we know that from permits. Save one part of the city, there is no fracking currently. That one part of the City is in the 15<sup>th</sup> Council District where it is occurring. If the economy continues, it will be less and less desired. We have given more authority to the Baldwin Hills Conservancy to buy well area and turn it into greenspace. Fracking has slowed down a lot in the state. There is not a lot in the area that has asked for a permit related to fracking. Once a permit is requested it is conditional.**

**VMT – Interesting point and I am glad to hear you mention it because I get into arguments with Planning because there is a group of bike only people there. I am not anti-bike, but I think traffic should move. We have a serious problem because Planning wants to slow traffic down, which is a serious problem. Now I will ride a bike, a stationary bike at a gym. Or I will walk. But it's kind of a pro-bicycle group right now that is making some of these decisions. I am not anti-progress, but this VMT is getting out of control and I am going to need your help if you feel this way.**

**Parole Board – Yes, the governor does listen.**

**Ms. Antler – This is her 19th appearance before the board and she is helping animals now, so she is getting out.**

**Assembly Member – This is worth engaging your legislative offices in.**

**Ms. Morocco – We are excited to have you coming to Pick Pico again this year.**

**D) LAPD - Captain Tina Nieto, 1663 S. Butler Ave, 310-444-0710 – I took over in May. Time flies; it has almost been a year. My first event is going to be Pick Pico and I am looking forward to it. I was looking at my Fitbit for my steps. Our goals are to stay fit so officers can catch criminals and people don't get sick. I've lost 19 pounds and hope to do another 30. Crime is up in LA. West LA has been the lowest in violent crime in the city for six years. Lowest in terms of arson, assaults with deadly weapons, etc. Crimes in this area are often neighbor or neighbor, domestic violence, homelessness issues, etc. I am asking for all your help on property crimes (cars getting broken into, car thefts, burglaries, etc). Over 50% of cars broken into on the Westside are because people leave their car unlocked or stuff in the car. Hide it, lock it, keep it. If you are going out shopping, don't leave your stuff on the seat. Cars getting stolen – if you have tandem parking, don't leave the keys in the car. Tandem parking incidents are a high percentage of car thefts. Burglaries, we are doing pretty well in burglaries. A high percentage of burglaries happen because of open back doors or windows. Please lock your stuff. Burglar alarms are good. We have partnered with FOWLA for the Ring. We don't endorse products, but the Ring did well in a test project. When I came over to West LA, I brought the project over here and we partnered with them because it is an affordable product. We don't endorse, but we partner with private security so that information can be shared. We are happy to invite partners to our meetings if you let Mario or Eric know. I have been trying to get more community alerts out there. You can use the 311 app if it's not a felony type of crime. West LA is 65 sq miles, but we have less resources because we are a safer division. If there is a pilot project, I am first to volunteer West LA, so we can be more effective for the community.**

**Ms. Broide - Are we at risk of losing officers because of the relatively low risk of crime here?**

**Captain Nieto – We have something called Fixed Post, where we have a certain number of officers that we need to run a division. In addition to that, every division gets a number of officers based on general crime numbers. Beyond that, the Chief of Police can give bonus numbers based on what is going on with crime. Certain numbers though don't change. Since I have been in west LA our numbers have been static.**

**Ms. Morocco – We are part of the Ring Initiative. Do you have a sense if that is making a difference? What are you doing for Pick Pico?**

**Captain Nieto – I do have a sense. Burglaries went down by a super high percentage maybe 60-70% with the Ring Initiative in our test area. What is needed for Pick Pico?**

**Ms. Morocco – We can discuss more later.**

**Mr. McMillan – How is the department navigating the conflicting issues with how to work with homeless people?**

**Captain Nieto – Homelessness should not be a crime. But homelessness does come with issues because some have mental issues and/or drug addiction. We have a transient unit, which I increased the numbers of by two officers. I was specific in how it was set up, because even though the officers were working hard, they did not have direction. So, they got specific direction on how to do the work and I changed the reporting structure, along with working with council office. It used to be we moved along homeless people. Recently, the department dedicated Todd Chamberlin out of Central to be the Homeless Czar and now they are trying to bring the whole City together and to set the same routines. I am a tenured captain, but not all are. They are doing this so everyone is trained quicker on what the resources are and how to handle the issues. The City Council passed a resolution to dispose of belongings under certain conditions, but that is being challenged in court. Things can change if we get an email from the City Attorney. I think our current City Attorney looks to see if the policies work for the community.**

**Ms. Tippit – On Exposition, the tent city has not come back but a lot of clothes are hanging on the fence.**

**Captain Nieto – We displace people and then people come back. The City has voted to provide housing, though I do not know where they are going to get the money. We are working with Laura's Law and the County for people who have mental issues, but are not taking their medication. We can get them into a bed that way. We are also tracking our top ten transients that are prone to violence.**

**You often see property crimes increase around encampments, although sometimes it is difficult to know exactly who is committing the crimes.**

**Ms. Burns – I saw a situation by Bank of America where the homeless person was blocking traffic. How is that best addressed?**

**Captain Nieto – If someone is acting in a manner where they are a danger to themselves or the community, you can call 911, but you have to be specific and say they are causing a danger. Pan handling is not a crime; don't call us for that. If you give people money, you encourage people to pan handle. Some people pan handle who are not homeless knowing they get more money on the Westside.**

**Ms. Tippit – With EXPO opening next month, I am now seeing bicyclists who are crossing Westwood on red lights because no cars are coming. How can that be handled?**

**Captain Nieto – Send Eric an email. This is a secondary duty for LAPD. It is a primary duty for West traffic. We have liaised with the sheriffs. We know crime is enhanced where people get off the line.**

**Mr. Shabsis – It is also important to have West Traffic out there because of drivers. As the school's representative, there has been overturned vehicles, people have backed up into families, lot's of issues.**

**Captain Nieto – Shoot me an email - [Tina.nieto@lapd.lacity.org](mailto:Tina.nieto@lapd.lacity.org). Follow me on twitter – @lapdtina. We get calls on why is there a helicopter over my house...it's because there is a crime. Once in a while we will send a helicopter to scare off bad guys as a tool.**

**Mr. Rosenfield – 2 random events, I apologize one was from last month, but I just heard about it. In February, on Kelton Ave, one of my neighbors said they heard gun shots at night and sent the flashes seen on his camera to LAPD. Also, this past Sunday night there was a patrol car shining its spotlight into the front yards on Kelton. I was wondering if you knew anything specifically about either incident?**

**LAPD, Officer Eric Swihart, 310-444-0738. HIDE – High Illumination. We were probably looking for someone, but we could be doing that as technique to drive down crime. Preventive measures for burglaries – we are partnering with Ring and with SelectaDNA, which is a way to mark your personal property and a way for police to identify your property. It's basically fingernail polish with tiny black dots. They are microdots with numbers on them that can be used to identify people's stolen goods. We are doing a test from Santa Monica to Olympic, Overland to Fox Hills. This area had the most burglaries, which is why we selected it. Normally kits for SelectaDNA are \$199, but they are going for a lesser amount as part of this project. Lot's of package thefts still in the area still. The**

Ring does work. If you see a helicopter, best thing to do is to stay inside. The tunnel at Selby is a massive problem. I have called the Department of Sanitation three times this week. I have been meeting with residents and my goal is to get it cleaned up. I am going to have the transient unit go by every morning and if someone is in there, get them out of there. We need to think about securing the tunnel. Maybe get a crossing guard responsible for access.

Ms. Morocco – We really do appreciate the attention.

Officer Swihart – To get in the cue to remove items from a homeless person on the street can take sixty days and then there has to be a notice posted for 72 hours before the removal.

E) Hannah Lee from Overland Elementary, [hannahleelausd@gmail.com](mailto:hannahleelausd@gmail.com) – I came here tonight to thank you. We have your chairs; our students love them. The chairs are bright purple, light to carry, no accidents. Overland is a California Distinguished School and an Arts Example School, so the children painted a picture of a purple heart with a picture for the Board.

Ms. Tippit – We will bring to Pick Pico.

Mr. Shabsis - For the record the chairs were given to the third grade class, where I have no children.

F) Ms. Tippit – We have been looking for a chair for our Selection Election. Jay Handal is the City's Election Czar. Our Selection is in November. Mike Eveloff has graciously stepped up as a volunteer to run our Selection. I want to thank you. We have been doing outreach at events and there will be more outreach for the Selection at Pick Pico.

Mr. Eveloff – We will be selling Ring for \$129 including tax at Pick Pico. The chimes will be a lower price than their current price and the Ring Pro will be available for cheaper rate as well. There will also be a stick up camera for \$129 that can go by the side of a house to monitor. The pro has a higher resolution camera and the software is slightly improved. Ring will be at Pick Pico with all their techs, so will need a place to park their truck.

Ms. Tippit – People should forward this info to their stakeholders. We are doing this because so many people wanted it the first time we sold it. It will also bring more people to Pick Pico.

**Ms. Broide – I think this is great because Ring is a great product. I had issues with it being subsidized, but this is a great way to do it.**

**G) Norm Bernier, West LA Chamber of Commerce, [normanbernier@hotmail.com](mailto:normanbernier@hotmail.com), 310-441-2900 – The First Wednesday Breakfast is Monday May 4 and Mayor Garcetti will attend. WNC Board members can pay a member rate of \$20. Signup at [www.westlchamber.org](http://www.westlchamber.org). We distributed Pick Pico fliers with Jae Wu at this past First Wednesday breakfast.**

***Ms. Morocco recuses herself and leaves the room.***

**H) Martin Expo Town Center - Dan Martin, presentation on proposed mix use project at 1101 Olympic Blvd.**

**Mr. Martin – Thanks for having us again. We have been here several times going back to 2012. We have been proud members of the Westside community for generations. With the arrival of the EXPO Line, we are working to put together a great TOD project.**

**Phil Simmons, Project Manager – It has been my privilege to represent the Martin Family for the last four years. I remember when I first met Dan and the rest of his family, they were so committed to creating a TOD. Their commitment has been to create an excellent transit oriented development and to finding the best and least impactful mechanism for growth that is coming to LA. We have had over 145 separate meetings with neighborhood councils and community groups. We have met with METRO, hundreds of businesses and residents. We have been interested in how we make growth smart growth. At the end of the day, this project provides the best opportunity for a TOD.**

**The project is 500 ft north of the new EXPO Station on Bundy. We have received thousands of responses from people that have been heard. I can say most of the feedback we heard was incorporated. We scrapped the original project, changed architects and I hope you agree we have an extraordinary project now. The plaza has been moved to street level to invite people in from Bundy and Olympic. Traffic has always been the number one concern. To make a great TOD, we know we had to incentivize transit use and to not be what Council Member Bonin labels a Transit Adjacent Project, but to be a true TOD. Traffic offsets – Our creative office and creative residential design is geared toward a high tech transit oriented**



demographic. We want off-peak travelers. We have unbundled parking. People who live close to where they work, who we expect to be a number of residents, they do not need a car. People will get a reduced rent who don't have a car as an incentive to reduce traffic. In our parking structure, there will be car share programs offered. The project will be offering a neighborhood serving retail component of 99,000 sq ft. We will have electric car charging capabilities, which can grow with demand. There will be 700 bike parking spaces and bike share. We will only rent to people who work within walking distance in our initial opening. We will be offering some affordable units. We are widening sidewalks. It will beautifully landscaped. These will be exclusively rental properties. We don't know what the supermarket will be yet. The developer does not know for sure, but we think it will probably be a gourmet market. We are entitling this space 50,000 sqft, which is the largest possible market it could be and then we are not understating the traffic. We are putting in 183 parking spaces above the code requirement for things like EXPO and we think there may actually be more spaces than that. We are not intending to provide subsidies for METRO, but will consider it. The parking is subterranean parking. There will be some sort of security, I do not know what underground. I believe we have met with every business owner and that should include West LA Limited who owns OSH. We do not know if we will be allowing pets or not. Utility won't be underground. We are going to have the project prewired for solar, but we do not know if we will put on solar panels at the beginning. The residential area is 508,200 sq ft. The AM/PM peak traffic counts are 426 and 624 respectively. 10% of the units will be affordable. That is, very low income will be 5% and workforce will be 5%, about 51 units. The height of the largest building is ten stories, 160 ft tall. The automotive dealership will most likely relocate. Although, the plan from the beginning has been to keep a small show room, which is planned for Olympic towards the front.

Ms. Broide – There are concerns about getting people across Olympic, concerns about too many markets in the area and I know the Councilman wants to activate the corner more.

Mr. Simmons – We would love to have you take a vote on this project. I think it is important for you to weigh in because our goal in setting a new standard is really setting a new standard for the whole city in terms of what a TOD is.

Ms. Broide – I would encourage us to wait until the May meeting.

Ms. Tippit – This is the third time they have been here. I don't think we should wait.

Mr. Shabsis – Did the neighborhood council in the area take a position?

Mr. Simmons – As far as I know, they support the project, but we will keep meeting with them. They will take a formal position on April 27.

 **Martin Expo Town Center Evolution**

**ORIGINAL CONCEPT**  
6.0 FAR - All Commercial  
Over Retail + Billboard  
Approximate Net New  
Daily Trips = 9,655  
AM peak hour = 1,084  
PM peak hour = 1,082



**REVISED PROJECT**  
(Original Application)  
4.0 FAR - Mixed Use  
516 Apartments  
67,000 s.f. retail  
(including fast food)  
200,000 s.f. Creative Office  
+ Billboard  
Net New Daily Trips = 8,407  
(13% reduction)  
AM peak hour = 553  
(49% reduction)  
PM peak hour = 626  
(42% reduction)



**FINAL PROJECT**  
3.9 FAR - Mixed Use  
516 Apartments  
99,000 s.f. retail (NO fast food)  
200,000 s.f. Creative Office  
NO Billboard  
Net New Daily Trips = 7,151  
(26% reduction)  
AM peak hour = 426  
(61% reduction)  
PM peak hour = 624  
(42% reduction)



Required Parking (Residential Apartments)			
Type	Quantity	Rate	Total Spaces
<b>Residential Required</b>			
Studio	192 units	1.0 spaces / unit	192
1-Bedroom	181 units	1.5 spaces / unit	272
2-Bedroom	137 units	2.0 spaces / unit	274
3-Bedroom	6 units	2.0 spaces / unit	12
<b>Subtotal Residential Parking Required:</b>			<b>750</b>
<b>Commercial Required</b>			
Use	Attributable Area (sf)	Rate	Total Spaces
Restaurant	9,000	10/1000 sf	90
Market	50,000	4/1000 sf	200
Retail	40,000	4/1000 sf	160
Office	200,000	2/1000 sf	400
<b>Subtotal Commercial Parking Required:</b>			<b>850</b>
<b>Subtotal Parking Required (Residential + Commercial):</b>			<b>1,600</b>
<b>Bike Parking Reduction Credit</b>			<b>-154</b>
<b>Transit Credit (Applied to Commercial Portion)</b>			<b>-81</b>
<b>Total Required Parking After Credits (with Apartments)</b>			<b>1,365</b>
<b>Total Stalls Provided</b>			<b>1,548</b>

Required Bicycle Storage			
Type	Quantity	Rate	Total Spaces
<b>Long-Term Bicycle Storage</b>			
Residential	516 Units	1.0 space / unit	516
Office	200,000 SF	1 space / 5,000 SF	40
Retail	90,000 SF	1 space / 2,000 SF	45
Restaurant	9,000 SF	1 space / 2,000 SF	5
<b>Long-Term Bicycle Storage Required:</b>			<b>606</b>
<b>Long-Term Bicycle Storage Provided:</b>			<b>634</b>
<b>Short-Term Bicycle Storage</b>			
Use	Quantity	Rate	Total Spaces
Residential	516 Units	1 space / 10 units	52
Office	200,000 SF	1 space / 10,000 SF	20
Retail	90,000 SF	1 space / 2,000 SF	45
Restaurant	9,000 SF	1 space / 2,000 SF	5
<b>Short-Term Bicycle Storage Required:</b>			<b>122</b>
<b>Short-Term Bicycle Storage Provided:</b>			<b>122</b>
<b>Short-Term Spaces Under Cover Required (Min. 50%):</b>			<b>61</b>
<b>Short-Term Spaces Under Cover Provided:</b>			<b>61</b>

Total Building Gross Floor Area	
Use	Size (sf)
Retail/Restaurant	99,000
Office	200,000
Residential	508,200
<b>Total</b>	<b>807,200</b>

City of Los Angeles Planning and Zoning Floor Area excludes exterior walls, stairs, shafts, rooms housing building equipment, parking areas, driveways, ramps, basement storage. It includes private balconies enclosed on three sides by walls.

Setbacks		
Area	Required	Provided
<b>Commercial</b>		
Front	0 feet	Not Required
Side	0 feet	Not Required
Rear	0 feet	Not Required
<b>Residential</b>		
Front	0 feet	Not Required
Side	10 feet (5 feet + 1 foot for every story above 2nd story)	<b>Building A: 20 feet</b>
Rear	19 feet (15 feet + 1 foot for every story above 3rd story)	N/A

Residential Units			
Type	Quantity	Percent	Ave. Size (sf)
Studio	192	37%	595
1-Bedroom	181	35%	790
2-Bedroom	137	27%	1,100
3-Bedroom	6	1%	1,350
<b>Total</b>	<b>516</b>	<b>100%</b>	<b>807</b>

Open Space			
Type	Quantity	Rate	Total (sf)
<b>Residential Open Space Required</b>			
Studio	192 units	100 sf / unit	19,200
1-Bedroom	181 units	100 sf / unit	18,100
2-Bedroom	137 units	125 sf / unit	17,125
3-Bedroom	6 units	175 sf / unit	1,050
<b>Total Residential Open Space Required</b>			<b>55,475</b>
<b>Residential Open Space Provided</b>			
Level 6 Roof Deck			4,930
Level 2 Courtyards			24,600
Ground Floor Courtyard			6,915
Indoor Amenity Rooms			8,930
Private balconies (202 units x 50 sf)			10,100
<b>Total Residential Open Space Provided</b>			<b>55,475</b>

**Gensler**

100 N. Regener Street  
Los Angeles, CA 90015  
Tel: 213.227.2400  
Fax: 213.227.2401

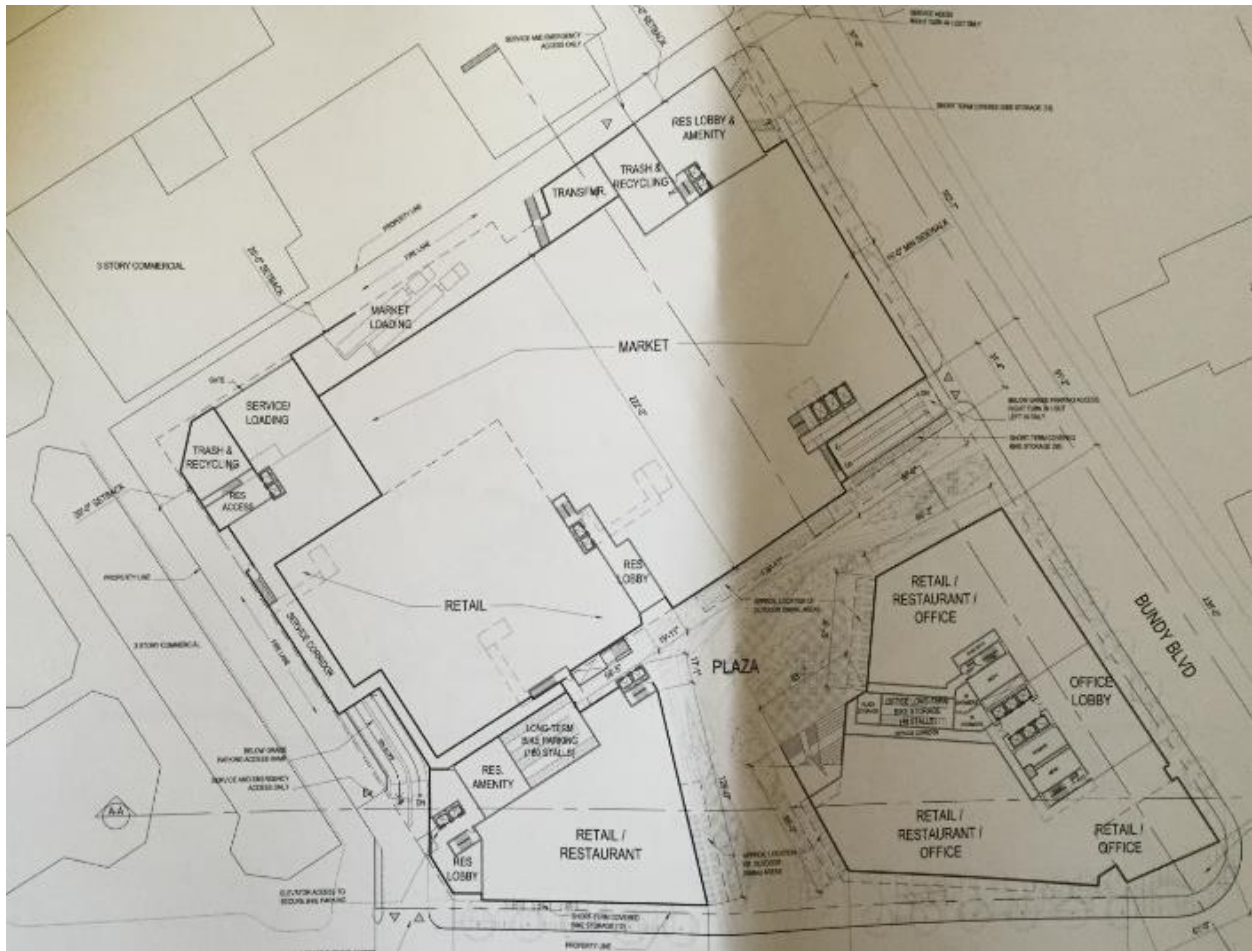
Project Name: Martin Expo Town Center  
Project Number: 10-0017-000  
City: Los Angeles  
Date: 10/15/2010

Sheet: A0.10

### Martin Expo Town Center Traffic Reduction Factors

- The retail program has been changed to eliminate fast food operators, which will result in an approximately 15% reduction in daily trip generation and 23% reduction in AM peak hour trip generation. As shown in the Final EIR, this reduces the number of impacted intersections after mitigation from 6 to 5 in the Existing Plus Project scenario and from 14 to 12 in the 2018 Plus Project scenario. See below for additional reductions.
- In addition to the change in retail usage described above, Fehr + Peers conducted a study of additional project-based traffic offsets that reflect additional reductions of approximately 15% AM/PM peak trips by virtue of factors that are not subject to formulaic inclusion in the formal Traffic Study. These factors include:
  - The removal of the Bergamot project;
  - A more realistic reduced background growth rate;
  - TDM credit applied to the office trips;
  - Walk to work credit applied to the residential by virtue of the proposed local rental preference program.
  - Helping to correct the current jobs/housing imbalance that forces workers to commute into and out of the area;
  - The clustering of much needed housing outside the neighborhoods and close to public transit;
  - Propose decoupled parking to incentivize transit usage;
  - Creative office design to attract high tech, off-peak workers;
  - Creative residential design (in addition to Creative office) to cater to the local worker and off-peak traveler demographic;
  - Car share program;
  - Extensive bike parking, bike share and bike service facilities.

With these additional offsets, the number of impacted intersections has been calculated to be reduced further from 5 to 4 (after mitigation) in the Existing Plus Project scenario, and from 12 to 8 in the 2018 Plus Project scenario.



**Mr. Shabsis – Are there any impacted intersections in our area?**

**Mr. Simmons team member – No.**

**Ms. Broide – The impact is the added overflow.**

**Ms. Antler moves that the WNC support the Martin Expo Town Center project as presented.**

**Second: Mr. Burke**

**10-1-3**

**Seats in favor: 1,4,5,8,9,10,11,13,15,16**

**Seats against: 7**

**Seats Abstaining: 12,14,17**

**Not present/vacant: 2,3,6**

**Passed**

*Mr. Morocco is reseated.*

## **I) WRAC Motions**

**Ms. Broide – There are competing motions at the City level on how to supervise LADWP. I would recommend supporting this because this is the motion that WRAC has endorsed.**

**Mr. Shabsis – This is a question of do we have a better shot at reform through City Hall or through the grassroots? I would go with incremental change via the prior.**

**Ms. Broide makes a motion that the WNC moves to support CF16-0093--Amend LA City Charter and Administrative Code to restructure the governance of the LADWP. Refers to City Council file 16-0093.**

**Second: Ms. Burns**

**Discussion - Several Board Members articulating not feeling comfortable voting on this motion without more information.**

**Ms. Broide rescinds her motion.**

*Mr. Martinez recuses himself and leaves the room.*

**Ms. Broide articulates the motion being considered - The WNC moves to support the following – Enforcement of all Zoning and Building Codes-- Whereas the Los Angeles City Attorney; the Los Angeles Department of Building and Safety; and the Los Angeles City Council continue to selectively enforce existing zoning ordinances to the detriment of our stakeholders quality of life including, but not limited to, short term rentals, illegal signs, illegal boarding houses and the like. Therefore the member councils of WRAC demand the city comply with its own ordinances and laws and immediately enforce all applicable zoning and building codes unless duly amended.**

**The motion is tabled.**

*Mr. Martinez is reseated.*

**Ms. Broide makes the following motion - The WNC moves to recommend to the Board of Neighborhood Commissioners and the Los Angeles City Council that the City administrative code be amended to define Neighborhood Council stakeholders as such: Stakeholders shall be defined as those who live, work, or own real property within the Neighborhood Council boundaries. With the approval of the Department of Neighborhood Empowerment, Neighborhood Councils may—and are encouraged to—expand this definition within their bylaws to include other defined groups of stakeholders.**

**Second: Mr. Martinez**

**14-0-1**

**Seats in favor: 1,2,4,5,7,8,9,10,11,12,13,14,15,16**

**Seats Abstaining: 17**

**Not present/vacant: 3,6**

**Passed**

**L) CD-5 Field Deputy Phillip Bennett – We have been pushing to get the tunnel cleaned up. I am going to talk to Joan. We have to elevate the issue. I do not know if Sanitation fully understands what is going on here. I am going to work hard to get a date sooner than the 24<sup>th</sup>. As soon as we hear back from the City Attorney’s Office whether this is considered a right of way that can be locked or unlocked, it would be fantastic. The encampments along Exposition were cleaned up. Coordinating with CD-11 and touching base to make sure we are not submitting multiple requests on homeless issues. Under the 405 there is an emerging encampment, we are aware of it.**


**M) Ms. Tippit – David is leaving the Board.**

**Mr. Burke – I am moving on, changing employers and will be doing work in Santa Monica. I officially resign my seat at the end of this meeting.**

***Ms. Antler leaves the meeting.***

**N) Ms. Burns, Treasurer – Treasurer’s Report**

**Ms. Burns outlined the treasures report, which is as follows:**

Department of Neighborhood Empowerment									
Reporting Month:	MARCH		MONTHLY EXPENDITURE REPORT						
NC Name:	Westside		Submitted: 4/14/2016 15:41:02						
Budget Fiscal Year:	2014-2015								
<b>FILL IN ALL THE UNSHADED (WHITE) FIELDS</b> (Must be submitted to the Department within 10 days of Board Approval along with documentation and hard copy)									
<b>EXPENDITURES BY LINE ITEM</b> (for more than 12 expenditures, you may continue entering on page 3 of this worksheet - see below)									
A	Date / Item / Service Description	BUDGET CATEGORY	VENDOR	INVOICE NUMBER	OUT OF STATE VENDOR	1099 Reportable	TOTAL		
1	3/4/16 Chairs for Elementary School	NPG	Overland Elementary		<input type="checkbox"/>	<input type="checkbox"/>	\$1,994.91		
2	3/1/16 Telephone	OPERATIONS	Verizon		<input type="checkbox"/>		\$46.20		
3	3/29/16 Telephone	OPERATIONS	Verizon				\$46.20		
4							\$0.00		
5							\$0.00		
6							\$0.00		
7							\$0.00		
8									
9									
10									
11									
12									
SUBTOTAL: Expenditures by Line Item (May include totals on page 3, if entered)							\$2,087.31		
B	CUMULATIVE EXPENDITURES FROM PRIOR MONTHS							\$6,800.11	
C	OUTSTANDING COMMITMENTS								
	C 1. Outstanding Checks (checks that have been issued, but have not yet cleared the account)							\$0.00	
	C 2. Rent/Lease								
	C 3. Contractual Services								
	C 4. Large Purchases								
	C 5. Neighborhood Purpose Grants (pending or in process)							\$3,000.00	
	C 6. Temporary Staffing Services								
	C 7. Storage								
	C 8. Other Outstanding Commitments ==> Description: Outreach, web hosting							\$620.00	
	SUBTOTAL: Outstanding Commitments							\$3,620.00	
D	Total Expenditures & Commitments							\$12,507.42	
E	Total Adjustments by Department (such as use taxes assessed, credits from prior fiscal years, etc) (use '+' for credits, '-' for deductions)								
F	Approved Budget 2014-2015							\$42,000.00	
G	Balance of Budget							\$29,492.58	

Revision Date 1-26-15

**Motion by Ms. Burns to approve the MER for March 2016 as presented.**

**Second: Ms. Morocco**

**14-0-0**

**Seats in favor: 1,2,4,5,7,8,9,11,12,13,14,15,16,17**

**Not present/vacant: 3,6,10**

**Passed**

**Ms. Morocco – We have some basic housekeeping for the budget. If you recall, we put money into categories at the beginning of this fiscal year. In order to fund Pick Pico, we are doing a Neighborhood Purposes Grant (NPG). We have the money, we just need to switch the designations for use.**

**Ms. Morocco makes a motion to move \$10,000 from category 200 funds to 400 funds.**

**Second: Ms. Burns**

**14-0-0**

**Seats in favor: 1,2,4,5,7,8,9,11,12,13,14,15,16,17**

**Not present/vacant: 3,6,10**

**Passed**

O) Ms. Morocco and Ms. Wu – The parking contract and the contract with FOWLA have been signed. We can now start paying for things. We have over 100 vendors signed up for Pick Pico with a lot of food options and over 16 kids zone attendees. Jae has been working on the entertainment line-up. Aaron is doing a lot of great work. You will get a serious in depth Pick Pico lets go email soon. We want Board support at the WNC table. We are asking for help from more people and I will be asking for three or four people from all your HOAs. The Push Broom Patrol will be back. It is going to be a great event. More info at [www.pickpico.org](http://www.pickpico.org), Like the WNC on Facebook #WestsideNeighborhoodCouncil, #PickPico.

Motion to adjourn by Ms. Burns at 10:01 pm.  
Unanimous

Submitted: By Aaron Rosenfield, Secretary

*Voting note regarding how abstentions are counted: Section 3 of the WNCs By-Laws state: "Except as otherwise specifically provided, an affirmative vote of a majority of those voting, not including abstentions, shall be required to pass motions."*

<http://wncla.org/wp-content/uploads/2015/09/Westside-nc-approved-bylaws-amendments-2014.pdf>.